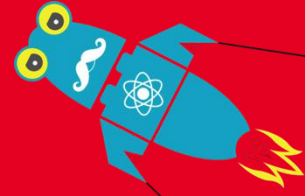
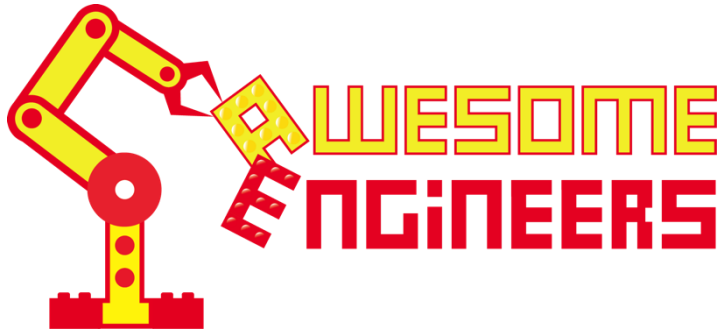


# AN OPPORTUNITY TO RUN AN EXCITING BUSINESS IN YOUR COMMUNITY



EXCITE  
ENGAGE  
EDUCATE



## *A Brief Introduction*

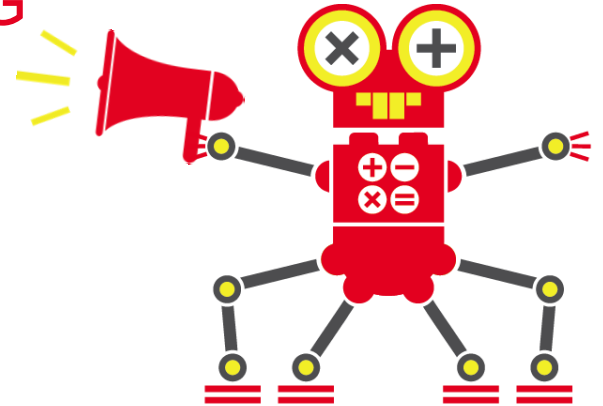
Melvyn Burgoyne

Co-Founder and Director Awesome Engineers

March 2017

# OVERALL MISSION

To **STIMULATE** and **SUPPORT** greater  
**ENGAGEMENT** and **UNDERSTANDING**  
of **STEM\*** skills in **YOUNG PEOPLE**  
through inspiring and creative **MODEL**  
**MAKING** programs.



\*Science, Technology, Engineering and Maths

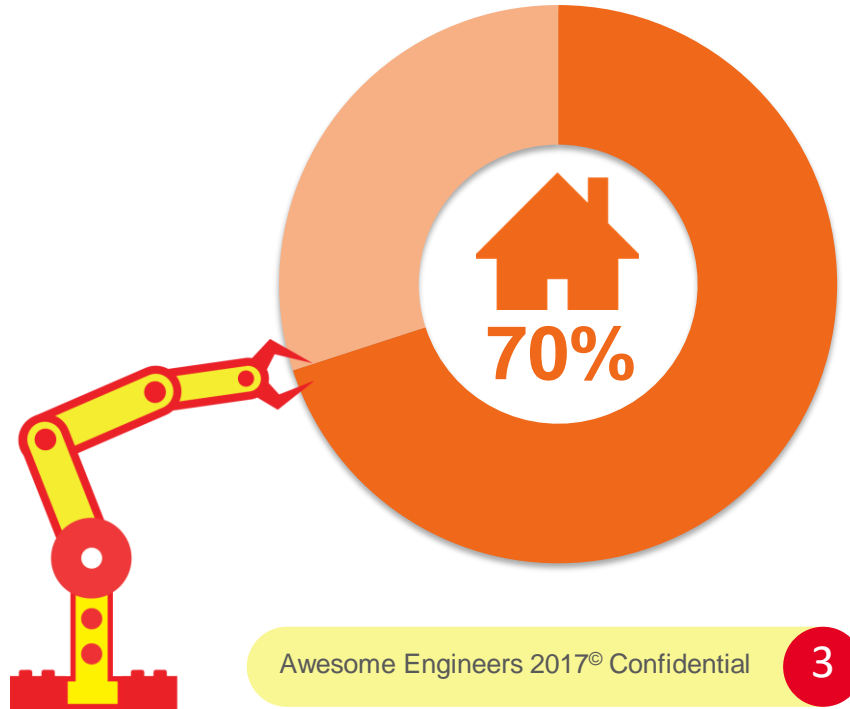
Awesome Engineers 2017© Confidential

2

# HOW WE WORK

## EXCITE

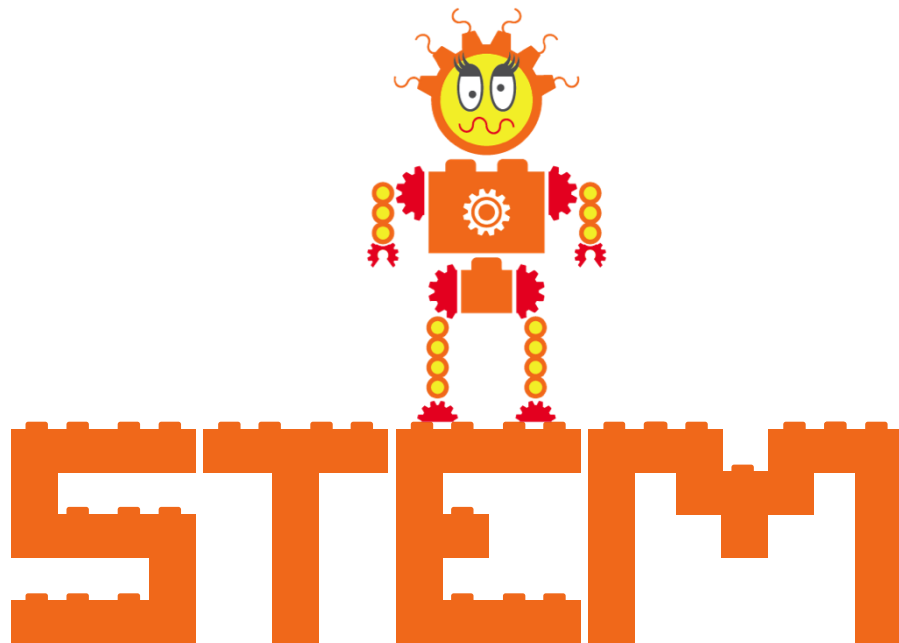
- We use the amazing brand power of LEGO® as the foundation of our activities.
- LEGO® IS PRESENT IN 70% OF ALL HOUSEHOLDS IN EUROPE.



# HOW WE WORK

## ENGAGE

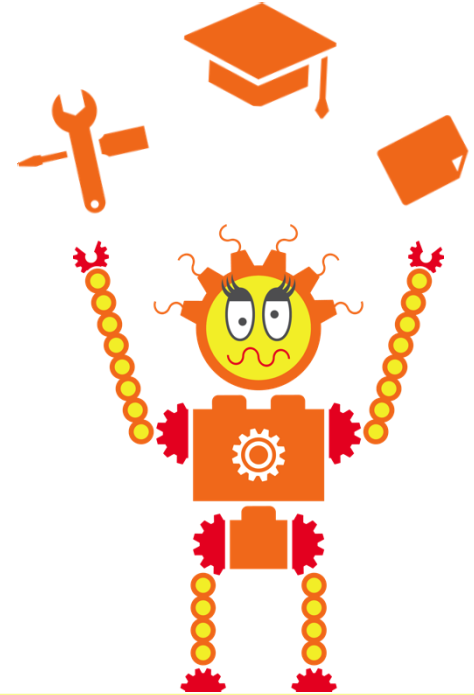
- AE have developed their own proprietary models based on LEGO® SPECIFICALLY TO DEMONSTRATE STEM CONCEPTS



# HOW WE WORK

## EDUCATE

- Our Students complete fun and imaginative worksheets which contain terms, concepts and questions all derived from the Primary School curriculum. Hence the learning achieved **DIRECTLY SUPPORTS** the child's understanding and subsequent progress in **STEM** subjects



# PICTURES AND WORDS



Some of the AE team  
at a charity event



Look I'm an  
Awesome Engineer!



Giraffe (Program 3) and  
Tricycle (Program 2)



How to improve your  
drill by Reyhan aged 6!

